

# Quick and Easy Part Program Development...



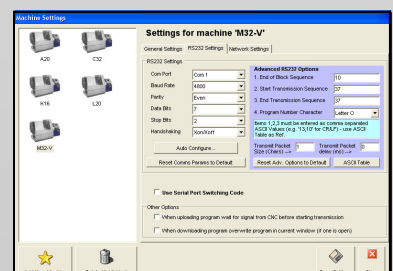
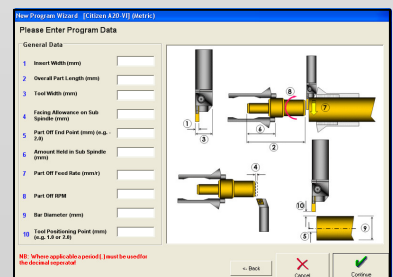
## ...with Citizen's low-cost **CNC Wizard Programming Aid**

- The CNC Wizard is an offline program editor with a conversational programming aid developed by Citizen specifically for Citizen machines.
- The simple wizard guides you through the creation of your part program.
- Each machining process is explained with a clear description and diagram. You just fill in the relevant data for your part.
- A superb support tool for both new and experienced Citizen Sliding Head users.
- Greatly reduces the amount of time spent typing lengthy M and G codes or consulting manuals.
- Helps reduce errors and offers a variety of validation checks to save you time.
- Supports all current Citizen models.
- Built-in RS232 and 'Citizen Net' Network communications for program transfer.
- Low Cost!

**Citizen Machinery UK Ltd**  
1 Park Avenue  
Bushey  
WD23 2DA

**Tel: 01923 691500**  
**Fax: 01923 691599**  
sales@citizenmachinery.co.uk

**To request further information please phone or email us.**



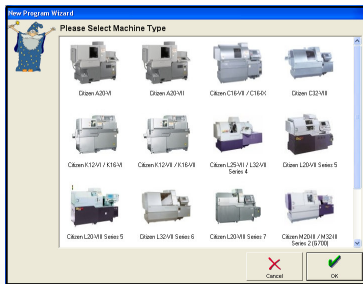
# Easy Steps to Program Creation



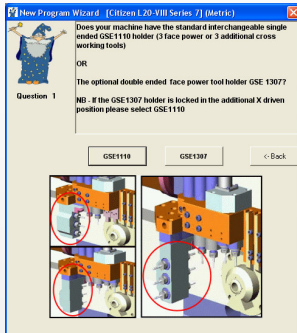
Citizen Machinery UK Ltd  
1 Park Avenue  
Bushey  
WD23 2DA

sales@citizenmachinery.co.uk  
www.citizenmachinery.co.uk

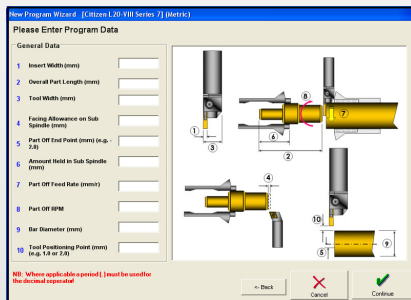
Tel: 01923 691500



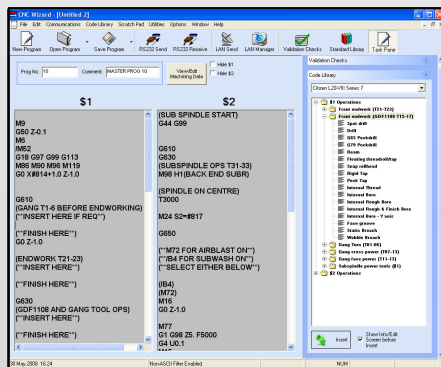
Select machine model...



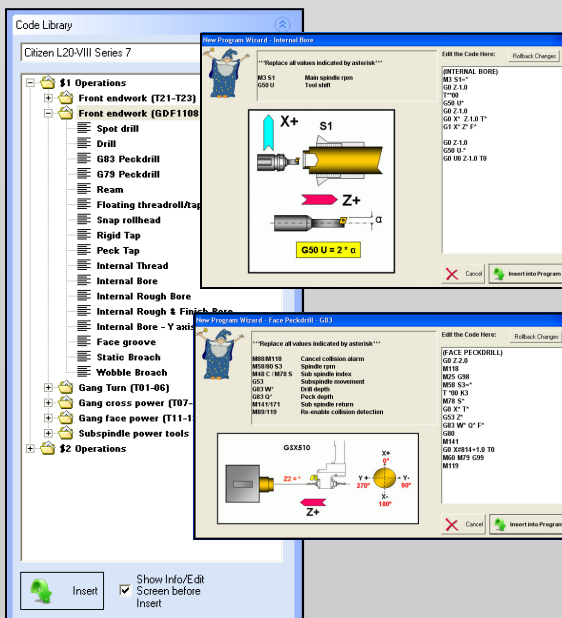
...then answer simple questions.



Select cut-off tool and enter basic program data.



The program template will be automatically generated including program start, finish and wait commands.



Select machining processes and enter data using the diagrams as a guide.

Finally, upload your finished program to the machine using the built-in RS232 or LAN communications.

## Testimonials

Here are some comments from our customers:

*"The software provided with the machine has made the most complex lathe in the factory the most user friendly. The machine is programmed from our engineering office off the shop floor, the majority of the programs do not need editing once programmed."*

*"After only a couple of hours training I now use the CNC Wizard for all offline programming on my new machine. I find it extremely quick & easy to use with its drop down menus and step by step guides enabling me to compile an accurate program in the shortest time."*

*"As you are aware this was a new concept for some of our guys, so having the Wizard as a programming aid made it so much easier for them to learn about the new machine, without the worry of instantly knowing all of the necessary codes."*

*"We are absolutely delighted with the "Wizard" software package. Both the operators who use the software when programming say that it saves them a tremendous amount of time. It generates a lot of programming codes & synchronizes the three different programming areas used. Their answer when I asked what they thought of it, was "Brilliant". That says it all really."*